

IRISH HEART FOUNDATION

South Cardiac Death in the Young Support Group


**Long QT
ICD
Cardiomyopathy**

The slide features the Irish Heart Foundation logo (a red heart) and the South Cardiac Death in the Young Support Group logo (a red heart with people icons). Below these is a photograph of two hands shaking. The text 'Long QT ICD Cardiomyopathy' is written in red at the bottom right.



L&T

social entrepreneurs IRELAND



"The reasonable man adapts himself to the world; the unreasonable one persists in trying to adapt the world to himself. Therefore all progress depends on the unreasonable man."

[Link](#)

George Bernard Shaw

L&T

The How

- Patient centered care
- Openness & communication
- Patient involvement
- Leadership & accountability
- Education & training
- Evidence based practice



L&T

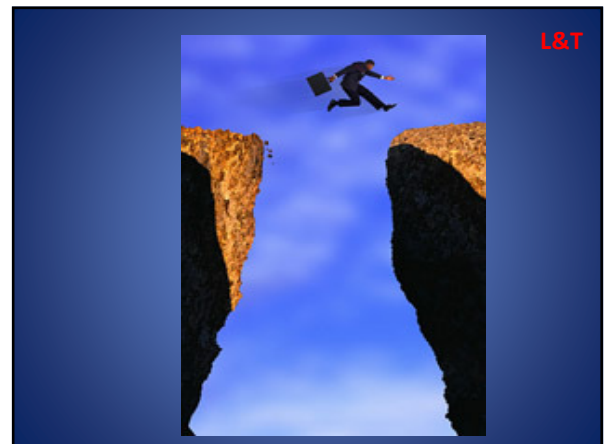
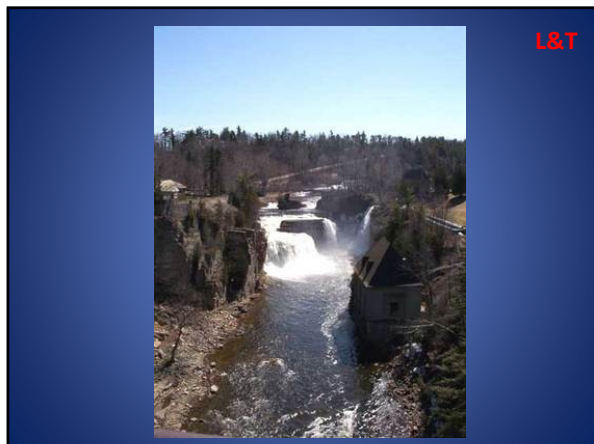
The Change Story

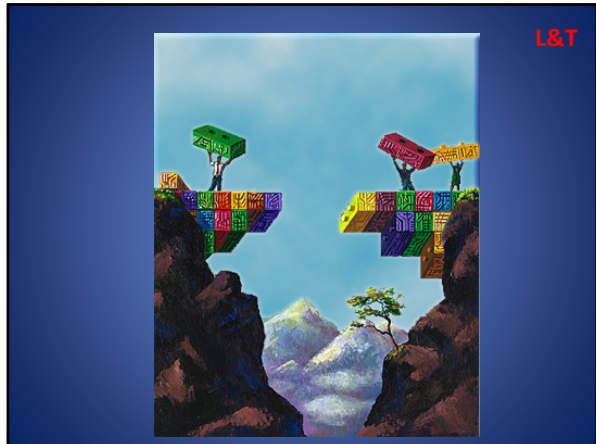
Why	What	Where
<ul style="list-style-type: none"> Compelling Case Burning Platform 	<ul style="list-style-type: none"> Strategy Structure Budget Culture 	<ul style="list-style-type: none"> Vision Destination
Whois impacted	
	<ul style="list-style-type: none"> Favourably Unfavourably 	
Howchange – Tactics	
	<ul style="list-style-type: none"> 'Hard' – Project Management 'Soft' – Communication, Partnership 	
When	Sequence	

L&T

Changing direction

- If only it were this simple.....



L&T