

Continuous quality improvement driving and embedding health reform - chronic disease management, the exemplar



Professor C.W.Brook
Department of Health
Victoria, Australia



Department of Human Services



Fragmented primary health care system



GPV Divisions
Quarterly No.3
Winter 2000

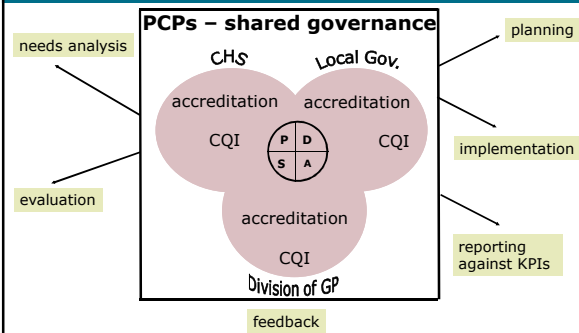
The Victorian primary health care system

- Partnerships across primary health and broader human services
- Service integration using statewide tools and enablers
- Integrated health promotion state-wide framework
- Centrally driven and locally implemented

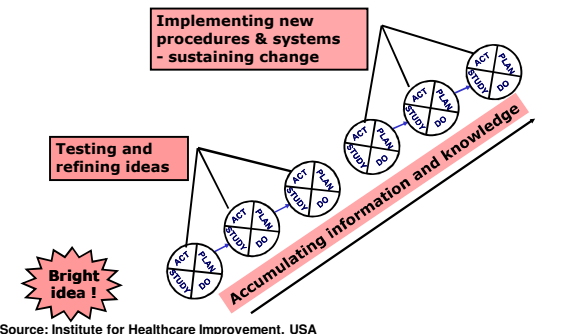
<http://www.health.vic.gov.au/pcps/>



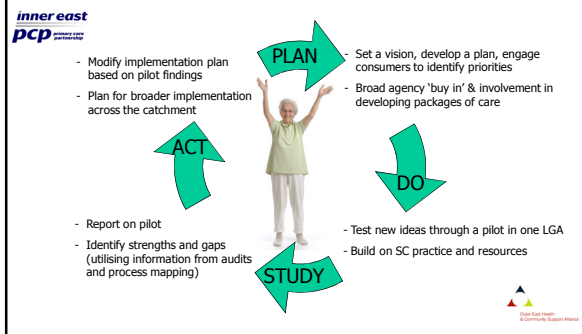
Quality improvement approach



Chronic disease management: Quality processes driving and sustaining system reform



Inner East PCP – Improving the Journey for people with Type 2 diabetes



In summary...

1. Partnerships and service integration is well developed in Victoria
2. Stretched the traditional quality improvement methodologies
3. Need:
 - the right governance
 - a shared sense of obligation and responsibility
 - shared practice
4. We are making a difference