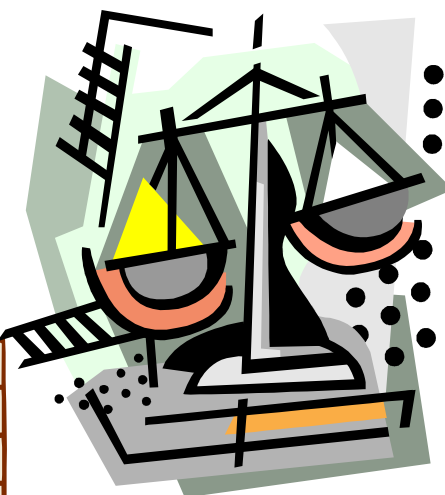




*Epidemiological Study of Falls in Ireland  
based on Incident and Claims data  
created on STARS Web from 2004-2008*

Irene O'Byrne-Maguire,  
Clinical Risk Advisor,  
BPhysio MEd MSc Healthcare (Risk Management &  
Quality) MISCP CMIOSH



Population adjusted (2007)

14/10,000 All ages, **85/10,000 65 +**

More **Males 65 +** fall, **Females 30-44** vulnerable, also **children 0-4 DML**



76.8% falls -No injury with **laceration 10.3%**, **bruising 7.9%**, **fracture 1%**, **Pain & Suffering 0.8%**

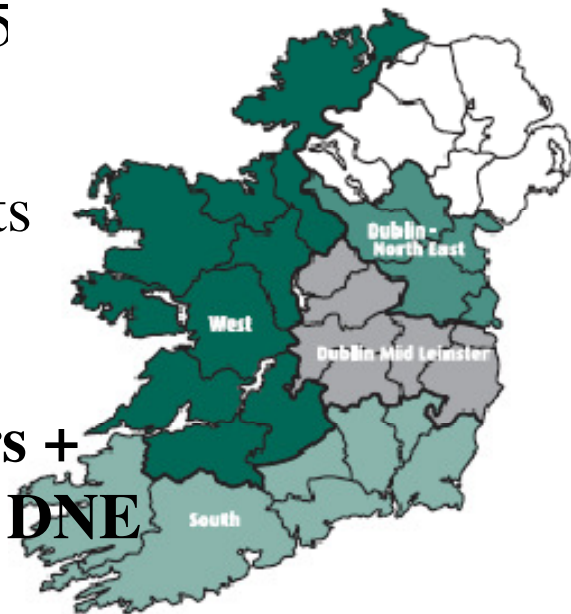
Falls Rate (2006)  
**2.7/1,000 bed days**

75% aged 65 & **60% 75+**

DML reports most falls, DNE least.

**More 75 yrs + South, 85+ DNE**  
Least DML

71%  
females  
claim with  
54.7% 65+  
- **31% fractures,**  
**26% fatalities,**  
9.1%  
laceration



**Frequency of Falls events by Time of Day and Sector  
from 1st Jan. 2004 - 30th Sept. 2008.**

