

What can we learn from high hazard analogous industries about patient safety?

Stanton E. Aggarwal R. West J. Bessant J.
October 2009







Aim



What can patient safety learn from the mining industry?

Lisheen mine, Ireland


Methods




- Literature review
- Pathway
- Semi-structured interviews
- Site visit

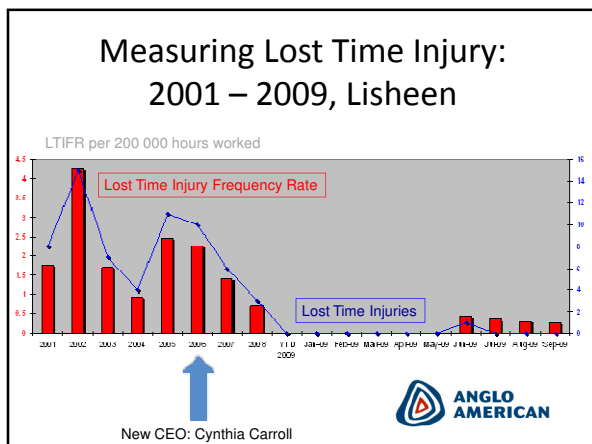
Results

Mining Pathway



Elective Surgical Pathway





Injury Status in Last 24 hours



Safety Performance Board



Golden Safety Rules

- Review of all fatal mining incidents
- Condition of employment and must be followed at all times
- **Where a task cannot be carried out safely – do not commence and do not continue to perform the task**



Golden Safety Rules



How has the mining industry improved its safety record?

- Board level safety objective of zero harm
- **Safety Rounds**
- Every shift starts with **Safety Meeting**
- **Safety Golden Rules**
- Open disclosure



Conclusion



Health care can learn about improving safety from analogous high hazard industries, such as mining